



P type – With efficient valve (EB type)

Features and Strengths

Excellent for thin plastic bags

Examples of use

Thin plastic bags



Recommended Lifting Force (Max.)

Model	Volume (cm ³)	Lifting Force (Kg) - Perpendicular		
		- 20 kPa	- 60 kPa	- 90 kPa
EB1.5/20-P15	2.2	0.30	0.50	0.60
EB1.5/20-P17	2.3	0.35	0.60	0.74
EB1.5/20-P20	2.6	0.40	0.80	0.90
EB1.5/20-P27	3.5	0.80	1.79	2.44
EB1.5/20-P32	4.9	1.08	2.13	2.62
EB1.5/40-P48	16.1	2.14	3.57	5.00
EB1.5/40-P60	23.2	2.60	5.27	5.92
EB4.0/20-P15	4.0	0.30	0.50	0.60
EB4.0/20-P17	4.1	0.35	0.60	0.74
EB4.0/20-P20	4.4	0.40	0.80	0.90
EB4.0/20-P27	5.3	0.80	1.79	2.44
EB4.0/20-P32	6.7	1.08	2.13	2.62
EB4.0/40-P48	29.4	2.14	3.57	5.00
EB4.0/40-P60	36.5	2.60	5.27	5.92
EB5.0/20-P15	5.19	0.30	0.50	0.60
EB5.0/20-P17	5.29	0.35	0.60	0.74
EB5.0/20-P20	5.59	0.40	0.80	0.90
EB5.0/20-P27	6.49	0.80	1.79	2.44
EB5.0/20-P32	7.89	1.08	2.13	2.62
EB5.0/40-P48	36.2	2.14	3.57	5.00
EB5.0/40-P60	43.3	2.60	5.27	5.92



Material Specifications

Material	Hardness Shore (°)	Color	Temperature (°C)
N6 - NBR (Nitrile)	60	Blue	-20~110
S3 - Silicone	30	Translucent White	-70~200
S5 - Silicone	50	Red	-70~200
W3 - White Silicone	30	Translucent White	-70~200
W5 - White Silicone	50	Translucent White	-70~200
W3 - White Silicone(FDA)	30	Translucent White	-70~200
W5 - White Silicone(FDA)	50	Translucent White	-70~200
U6 - Urethane	60	Dark Grey	0~100

* The temperature data is only for suction lip. Please contact us if it is used in over 60°C

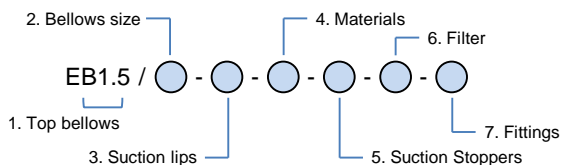
** For additional materials, please contact us







Material Resistance

Description	NBR (Nitrile)	Silicone	White Silicone	Urethane	Polyurethane
Wear Resistance	Excellent	Good	Good	Excellent	Excellent
Oil	Excellent	Poor	Poor	Excellent	Excellent
Weather / Ozone	Fair	Excellent	Excellent	Excellent	Excellent
Alcohol	Good	Good	Good	Fair	Fair
Acid	Fair	Poor	Poor	Poor	Fair



Build an Ordering No.



1. Top bellows	Description	Symbol
	Top bellows 1.5 folds with efficient valve	EB1.5
	Top bellows 1.5 folds with efficient valve + Middle bellows 2.5 folds	EB4.0
	Top bellows 1.5 folds with efficient valve + Middle bellows 3.5 folds	EB5.0
2. Bellow size	Description	Symbol
	20mm bellow diameter: For P15, P17, P20, P27 & P32	20
	40mm bellow diameter: For P48 & P60	40
3. Suction lips	Description	Symbol
	P type lip, 15mm diameter	P15
	P type lip, 17mm diameter	P17
	P type lip, 20mm diameter	P20
	P type lip, 27mm diameter	P27
	P type lip, 32mm diameter	P32
	P type lip, 48mm diameter	P48
	P type lip, 60mm diameter	P60
4. Materials	Description	Symbol
	NBR (Nitrile), 60° hardness	N6
	Silicone, 30° hardness	S3
	Silicone, 50° hardness	S5
	White Silicone, 30° hardness	W3
	White Silicone, 50° hardness	W5
	White Silicone, 30° hardness (FDA)	W3(FDA)
	White Silicone, 50° hardness (FDA)	W5(FDA)
	Urethane, 60° hardness	U6
5. Suction Stoppers	Description	Symbol
	D type	D
6. Filter	Description	Symbol
	No filter	Blank
	Mesh disk filter (200mesh)	F2
7. Fittings	Description	Symbol
	Fitting, G1/8 female	18F
	Fitting, G1/4 female	14F
	Fitting, G1/8 male	18M
	Fitting, G1/4 male	14M
	Fitting, G3/8 male	38M

Spare Parts – Top bellows

Part No.	Description
EB1.5/20	Top bellows 1.5 folds for P15, P17, P20, P27 & P32 with efficient valve
EB1.5/40	Top bellows 1.5 folds for P48 & P60 with efficient valve



Spare Parts – Middle bellows

Part No.	Description	Part No.	Description
MB2.5/20	Middle bellows 2.5 folds for P15, P17, P20, P27 & P32	MB3.5/20	Middle bellows 3.5 folds for P15, P17, P20, P27 & P32
MB2.5/40	Middle bellows 2.5 folds for P48 & P60	MB3.5/40	Middle bellows 3.5 folds for P48 & P60

Spare Parts – Suction Stoppers

Part No.	Description	Part No.	Description
MS20-D	Stopper D type for P15, P17, P20, P27 & P32	MS40-D	Stopper D type for P48 & P60

Spare Parts – Filters

Part No.	Description
VTFE20	Mesh disk filter (200mesh) for 20mm bellow diameter
VTFE40	Mesh disk filter (200mesh) for 40mm bellow diameter

Spare Parts – Suction lips

Part No.	Description	Part No.	Description
P15-N6	P type - 15mm diameter, NBR, 60° hardness	P15-W5	P type - 15mm diameter, White Silicone, 50° hardness
P17-N6	P type - 17mm diameter, NBR, 60° hardness	P17-W5	P type - 17mm diameter, White Silicone, 50° hardness
P20-N6	P type - 20mm diameter, NBR, 60° hardness	P20-W5	P type - 20mm diameter, White Silicone, 50° hardness
P27-N6	P type - 27mm diameter, NBR, 60° hardness	P27-W5	P type - 27mm diameter, White Silicone, 50° hardness
P32-N6	P type - 32mm diameter, NBR, 60° hardness	P32-W5	P type - 32mm diameter, White Silicone, 50° hardness
P48-N6	P type - 48mm diameter, NBR, 60° hardness	P48-W5	P type - 48mm diameter, White Silicone, 50° hardness
P60-N6	P type - 60mm diameter, NBR, 60° hardness	P60-W5	P type - 60mm diameter, White Silicone, 50° hardness
P15-S3	P type - 15mm diameter, Silicone, 30° hardness	P15-W3(FDA)	P type - 15mm diameter, White Silicone, 30° hardness (FDA)
P17-S3	P type - 17mm diameter, Silicone, 30° hardness	P17-W3(FDA)	P type - 17mm diameter, White Silicone, 30° hardness (FDA)
P20-S3	P type - 20mm diameter, Silicone, 30° hardness	P20-W3(FDA)	P type - 20mm diameter, White Silicone, 30° hardness (FDA)
P27-S3	P type - 27mm diameter, Silicone, 30° hardness	P27-W3(FDA)	P type - 27mm diameter, White Silicone, 30° hardness (FDA)
P32-S3	P type - 32mm diameter, Silicone, 30° hardness	P32-W3(FDA)	P type - 32mm diameter, White Silicone, 30° hardness (FDA)
P48-S3	P type - 48mm diameter, Silicone, 30° hardness	P48-W3(FDA)	P type - 48mm diameter, White Silicone, 30° hardness (FDA)
P60-S3	P type - 60mm diameter, Silicone, 30° hardness	P60-W3(FDA)	P type - 60mm diameter, White Silicone, 30° hardness (FDA)
P15-S5	P type - 15mm diameter, Silicone, 50° hardness	P15-W5(FDA)	P type - 15mm diameter, White Silicone, 50° hardness (FDA)
P17-S5	P type - 17mm diameter, Silicone, 50° hardness	P17-W5(FDA)	P type - 17mm diameter, White Silicone, 50° hardness (FDA)
P20-S5	P type - 20mm diameter, Silicone, 50° hardness	P20-W5(FDA)	P type - 20mm diameter, White Silicone, 50° hardness (FDA)
P27-S5	P type - 27mm diameter, Silicone, 50° hardness	P27-W5(FDA)	P type - 27mm diameter, White Silicone, 50° hardness (FDA)
P32-S5	P type - 32mm diameter, Silicone, 50° hardness	P32-W5(FDA)	P type - 32mm diameter, White Silicone, 50° hardness (FDA)
P48-S5	P type - 48mm diameter, Silicone, 50° hardness	P48-W5(FDA)	P type - 48mm diameter, White Silicone, 50° hardness (FDA)
P60-S5	P type - 60mm diameter, Silicone, 50° hardness	P60-W5(FDA)	P type - 60mm diameter, White Silicone, 50° hardness (FDA)
P15-W3	P type - 15mm diameter, White Silicone, 30° hardness	P15-U6	P type - 15mm diameter, Urethane, 60° hardness
P17-W3	P type - 17mm diameter, White Silicone, 30° hardness	P17-U6	P type - 17mm diameter, Urethane, 60° hardness
P20-W3	P type - 20mm diameter, White Silicone, 30° hardness	P20-U6	P type - 20mm diameter, Urethane, 60° hardness
P27-W3	P type - 27mm diameter, White Silicone, 30° hardness	P27-U6	P type - 27mm diameter, Urethane, 60° hardness
P32-W3	P type - 32mm diameter, White Silicone, 30° hardness	P32-U6	P type - 32mm diameter, Urethane, 60° hardness
P48-W3	P type - 48mm diameter, White Silicone, 30° hardness	P48-U6	P type - 48mm diameter, Urethane, 60° hardness
P60-W3	P type - 60mm diameter, White Silicone, 30° hardness	P60-U6	P type - 60mm diameter, Urethane, 60° hardness

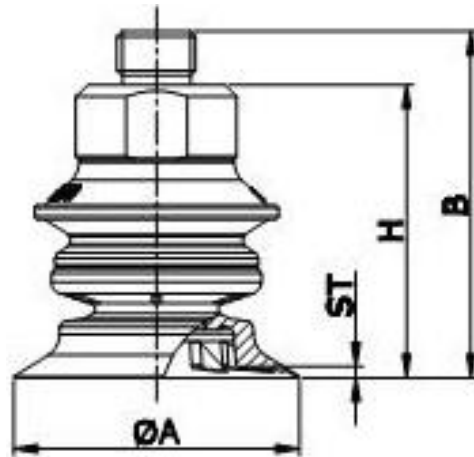


Spare Parts – Fittings

Part No.	Code No.	Description
18F	350 006 1101	Fitting – EB type, G1/8 female for 20mm bellow diameter
14F	350 006 1501	Fitting – EB type, G1/4 female for 20mm bellow diameter
18M	350 006 1201	Fitting – EB type, G1/8 male for 20mm bellow diameter
14M	350 006 1301	Fitting – EB type, G1/4 male for 20mm bellow diameter
38M	350 006 1401	Fitting – EB type, G3/8 male for 20mm bellow diameter
18F	350 006 1102	Fitting – EB type, G1/8 female for 40mm bellow diameter
14F	350 006 1502	Fitting – EB type, G1/4 female for 40mm bellow diameter
18M	350 006 1202	Fitting – EB type, G1/8 male for 40mm bellow diameter
14M	350 006 1302	Fitting – EB type, G1/4 male for 40mm bellow diameter
38M	350 006 1402	Fitting – EB type, G3/8 male for 40mm bellow diameter



Dimensional Data



[EB1.5 & 4.0 & 5.0 / 20 & 40 series]

Fitting
18F
18M
14F
14M
38M

[Unit : mm]

Model	Ø A	G	ST	H*	B *
EB 1.5/20 – P15	15.5	Female thread : 1/8", 1/4" Male thread : 1/8", 1/4", 3/8"	0.8	28.6	37.6
EB 1.5/20 – P17	17		0.9	29	38
EB 1.5/20 – P20	20		0.9	29.9	38.9
EB 1.5/20 – P27	27		1.4	30.9	39.9
EB 1.5/20 – P32	34		1.5	33.3	42.3
EB 4.0/20 – P15	15.5		0.8	39.4	48.4
EB 4.0/20 – P17	17		0.9	39.8	48.8
EB 4.0/20 – P20	20		0.9	40.7	49.7
EB 4.0/20 – P27	27		1.4	41.7	50.7
EB 4.0/20 – P32	34		1.5	44.1	53.1
EB 5.0/20 – P15	15.5		0.8	44.4	53.4
EB 5.0/20 – P17	17		0.9	44.8	53.8
EB 5.0/20 – P20	20		0.9	45.7	54.7
EB 5.0/20 – P27	27		1.4	46.7	55.7
EB 5.0/20 – P32	34		1.5	49.1	58.1
EB 1.5/40 – P48	48		1.7	49.1	58.1
EB 1.5/40 – P60	60		2.8	52.1	61.1
EB 4.0/40 – P48	48		1.7	71.5	80.5
EB 4.0/40 – P60	60		2.8	74.5	83.5
EB 5.0/40 – P48	48		1.7	81.5	90.5
EB 5.0/40 – P60	60	2.8	84.5	93.5	

* Dimension "H" and "B" is measured with 14M fitting option